

PRESENTATION FOR GPE



GEUMGOG PLANT EQUIPMENT CO.,LTI

www.geumgog.com

CONTENTS



1. Location
2. Profile
3. Organization
4. Fabrication capacity
5. Shop lay-out
6. License
7. Project Experience list

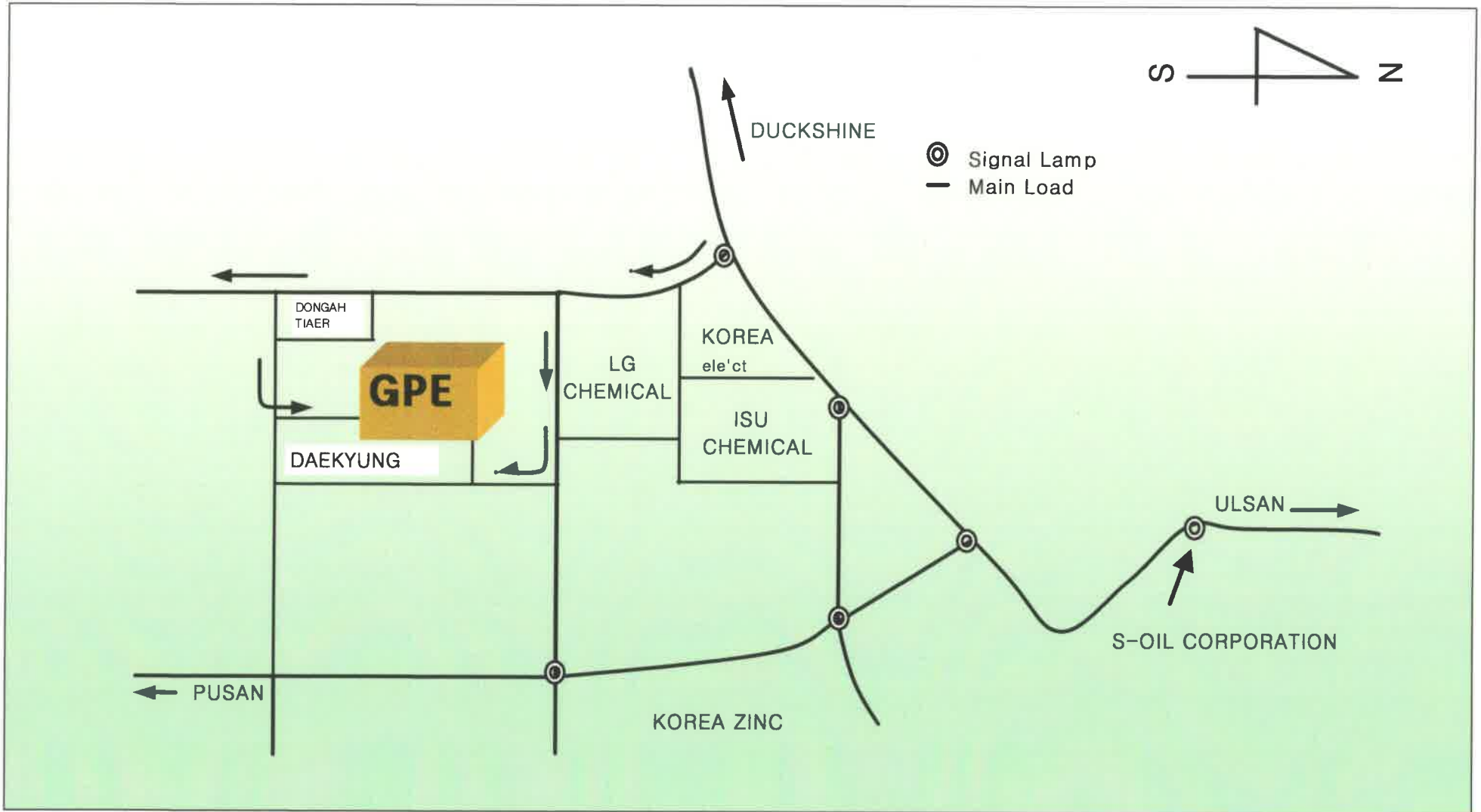
1.LOCATION



Head Office

304 HWASAN-LI, ONSAN-EUB, ULJU-GUN,
ULSAN, KOREA 689-890
TEL:(8252)237-6446
FAX:(8252)237-6444

Special Notice
30km Distance from ULSAN Airport to GPE.



2.PROFILE

■ **Company** : Geumgog plant Equipment Co.,Ltd

Head Office & Main Plant

#304, Hwasan-Ri, Onsan-Eub, Ulju-Gun, Ulsan, Korea.689-896

TEL : +82 - (0)52-237-6446, FAX : +82 - (0)52-237-6444

■ **Outline**

December 31, 2008 Based on Date

Capital : ₩ 300,000,000

Annual : ₩ 6,000,000,000 (Achieved sales in 2008)

■ **History**

Founded Geumgog Plant Equipment, In1990.

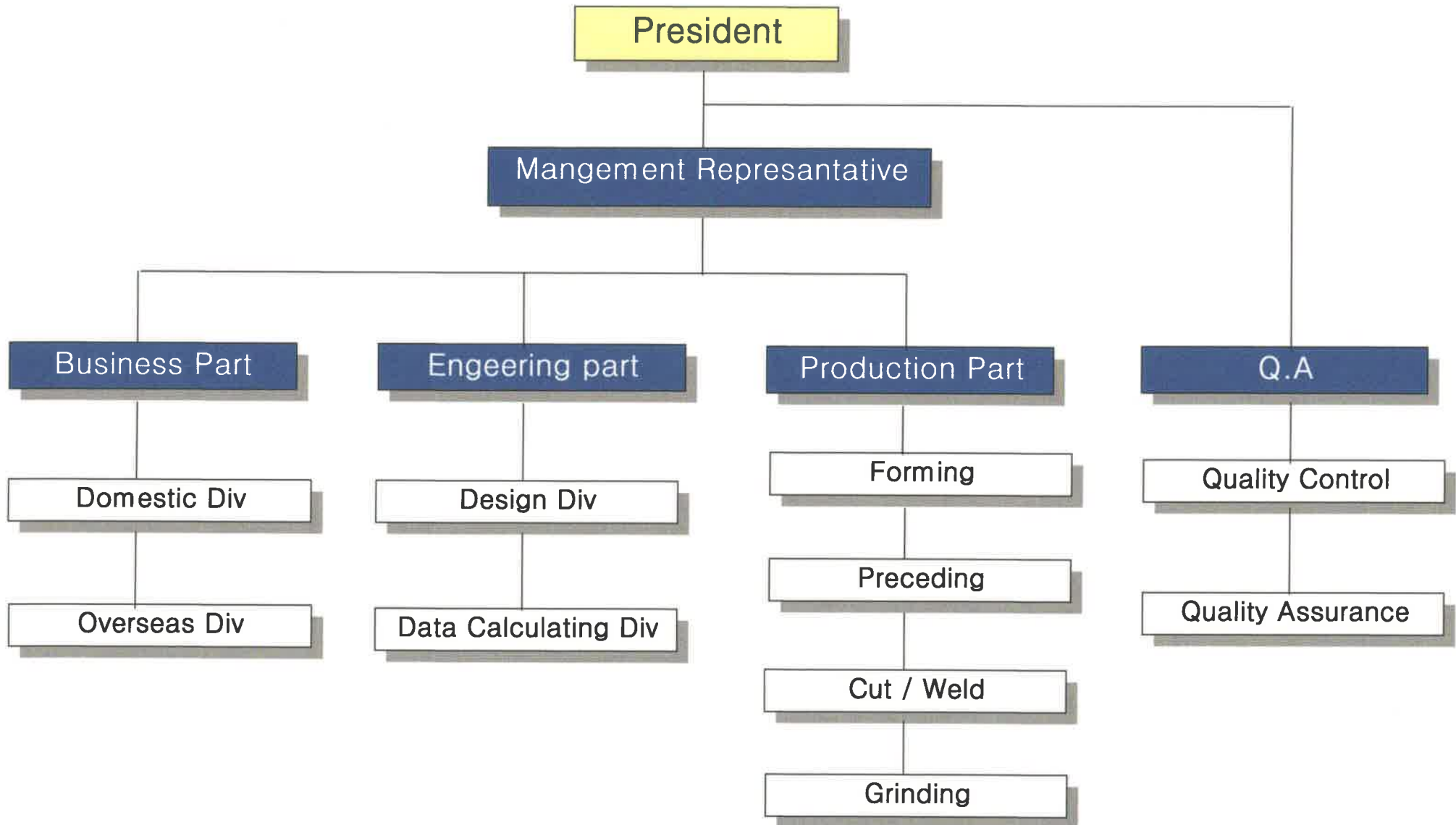
Onsan Factory Geumgog Plant Equipment, In 2002.

■ **Main Product**

Chemical Plant Equipments

(Head Plates)

3. ORGANIZATION



4.FABRICATION CAPACITY

PRODUCTION CAPACITY

■ Handling Capacity (Max)

- Weight : 50 ton
- Diameter : 11,000 mm
- Length : 20,000 mm

■ Cold Head Forming Capacity(Max)

- Thickness : 190 m/m
- Diameter : 7,100 m/m (T20 and less)
- Weight For Handling : 20 ton

■ Hot Head Forming Capacity(Max)

ED Type

- Thickness : 200 m/m
- Diameter : 3,600 m/m
- Weight For Handling : 20 ton

Hemi Type

- Thickness : 200 m/m
- Diameter : 2,500 m/m
- Weight For Handling : 20 ton

FACILITY

■ Crane

- Gantry Crane	:	20 ton	1 Set
- Over Head Crane	:	20/10 ton	2 Sets
		15 ton	1 Set
		10 ton	4 Sets
		5 ton	5 Sets
- Fork Lifter	:	7 ton	1 Set
		15 ton	1 Set

■ Cutting Machine

- Plasma cutter	:	Automatic	4 Sets
- IK 93	:	Automatic	4 Sets
- YK150	:	Automatic	8 Sets

■ Press (oil Hydraulic Type)

- 5000Ton	:	1 Set
- 3000Ton	:	1 Set
- 2500Ton	:	1 Set
- 1000Ton	:	1 Set
- 600Ton	:	1 Set

■ **Head Spinning Machine**

- 35T X Ø7300 : 1 Set
- 35T X Ø5000 : 1 Set
- Max Diameter : 7300 mm
- Max Thickness : 40 mm

■ **Turn Table**

- 30Ton : 1 Set
- 50Ton : 2 Sets

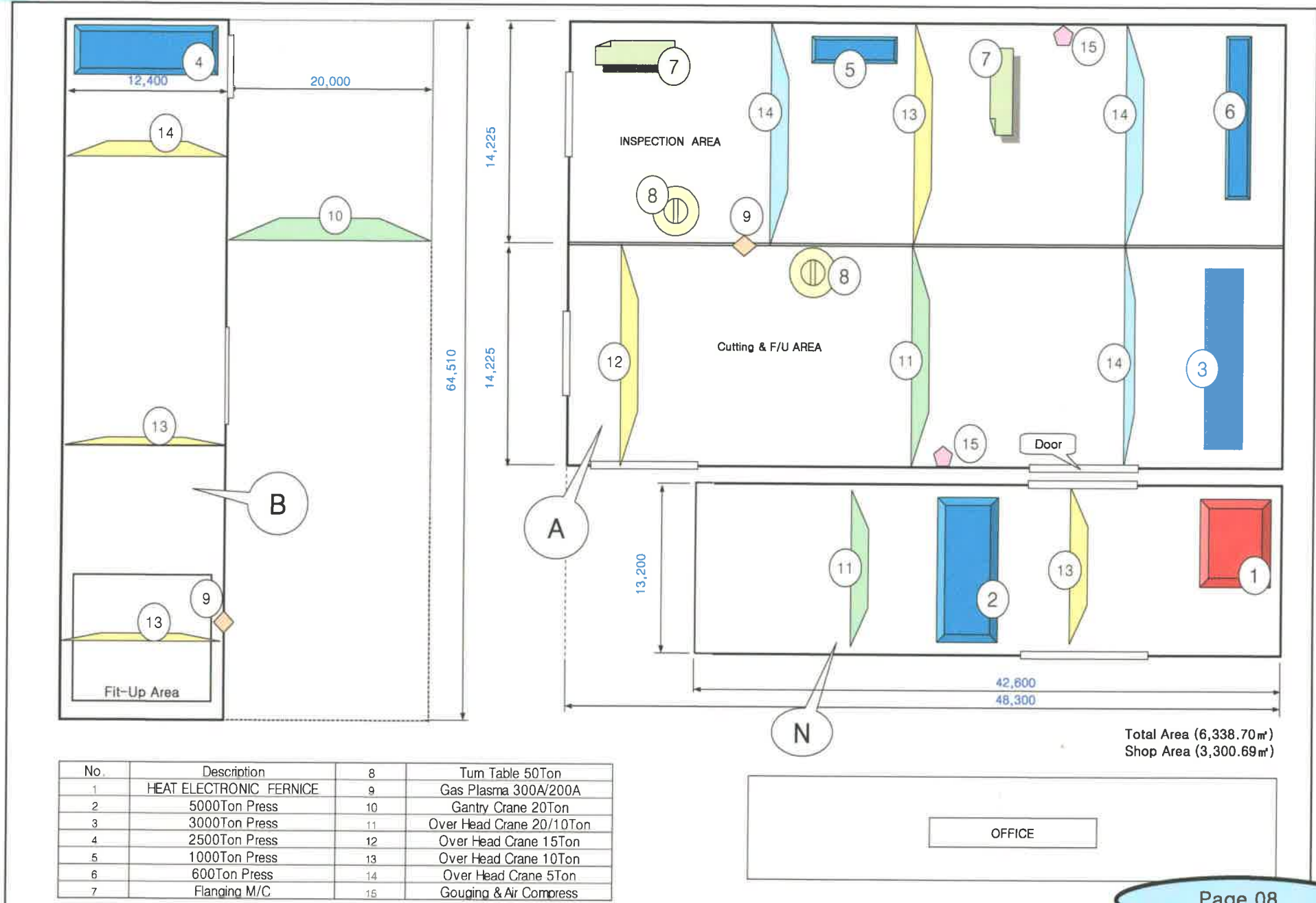
■ **Welding Machine**

- SMAW : 10 Sets
- GTAW : 2 Sets
- FCAW : 13 Sets
- SAW : 2 Sets
- GOUGING : 5 Sets

■ **ELECTRIC HEAT TREATMENT FURNACE**

- 5000L x 5000W x 2000H : 1 Set

5. SHOP LAY-OUT



Total Area (6,338.70m²)
Shop Area (3,300.69m²)

6. LICENSE

1. Certificate of ISO 9001
2. Manufactures of high pressure gas facilities
(by Korea government)
3. Factory Certificate

7.PROJECT EXPERIENCED LIST

Head Plate – Cold Forming

Year	Customer	Plant (Project)	Q'ty	Major Spec (Sample Item)	Delivery
1999	HANJUNG DCM	FDI-836	1	A516-70N / T28 x ID7010.4 (2:1 SEGMENT)	1999.06.10
	DOOSAN/ABB		4	SA516-70N / T60 x ID3505.2 (2:1 ELLIP)	1999.08.11
	DKME/ABB		2	SA240-321 / T75 x ID3657.6 (2:1 ELLIP)	1999.09.15
	DOOSAN/LG ENG	NODCO PJT	1	SA516-70+347S / T38+3.2 x ID880 (2:1 ELLIP)	1999.11.05
	DOOSAN/LG ENG	NODCO PJT	1	SA387-11+347S / T23+3.2 x ID1040 (2:1 ELLIP)	1999.11.11
	KOREA HEAVY IND	CPC RFCC PJT	1	SA516-60+HIC / T24 x ID6700 (2:1 SEGMENT)	1999.11.12
	DOOSAN/LINDE AG	ADNOC PJT	2	SA516-70N / T40 x ID2000 (2:1 ELLIP)	1999.12.09
	DOOSAN/LINDE AG	ADNOC PJT	2	SA51670 / T43 x ID2200 (2:1 ELLIP)	1999.12.09
	DOOSAN/LINDE AG	ADNOC PJT	2	SA516-70 / T17 x ID4400 (2:1 ELLIP)	1999.12.28
	DOOSAN/LINDE AG	ADNOC PJT	2	SA240-304L / T36 x ID2400 (2:1 ELLIP)	1999.12.28
2000	DOOSAN/MCEC	PFK RA PJT	2	SA387-11 CL.2 / T44 x ID4200 (HEMI)	2000.01.20
	DKME/BPMCO	LNG EXPANSION PJT	2	SA516-60+S5 / T64 x ID1730 (2:1 ELLIP)	2000.02.24
	DKME/LGEC	CPC RFCC PJT	2	A387-11 CL.2 / T68 x ID6700 (2:1 ELLIP)	2000.04.28
	HANTECH/SFC	TA/PTA PLANT	2	SA516-70+B265-1 / T21+2.5 x ID2010 (2:1 ELLIP)	2000.05.04
	HANTECH/SFC	TA/PTA PLANT	2	SA516-70+B265-1 / T54+3 x ID4900 (2:1 SEGMENT)	2000.05.25
	DOOSAN/TOTAL SOUTH PAR	V/S PJT	4	A516-65N / T78 XID3050 (2:1 ELLIP)	2000.07.21
	HANJUNG DCM/KOREA HEAVY LND	RELIANCE JAMNAGAR	2	SA516-70N / T76 x ID6100 (2:1 SEGMENT)	2000.09.08
	HANTECH/TAEKANG INDUSE	PTA PJT	4	SA516-70+B265-1 / T28+2.5 x ID2400 (2:1 ELLIP)	2000.11.28
	KYUNGSHIN PLANT/KIG	KIG ONYANG PLANT	2	A283-C / T22 x ID6000 (10% DISHED)	2000.12.27
2001	DKME/HYUNDAI E&C	NGL-4	2	SA516-60N / T70 x ID3700 (2:1 ELLIP)	2001.01.16
	JMC/SAMSHIN LIMITED		1	A516-70N / T92 x ID2500 (BALL)	2001.02.16
	HANTECH/SFC	AMMONIA PLANT	2	A387-11 CL.2 / T47 x ID1860 (HEMI)	2001.01.30

Head Plate – Cold Forming

Year	Customer	Plant (Project)	Q'ty	Major Spec (Sample Item)	Delivery
2001	DOOSAN/MHI	KALTIM-4	1	A516-70+A240-304L / T23+3.5 x ID4540 (2:1 ELLIP)	2001.05.31
	DOOSAN/ABB	OHANET DEVELOPMENT	2	A203-D / T56 x ID4000 (2:1 ELLIP)	2001.06.20
	DOOSAN/SKEC	NRP REVAMP	2	SA516-60N / T75 x ID2600 (2:1 ELLIP)	2001.06.16
	DKME/PT.DIHI		1	A240-304 / T22 x ID6500 (10% DISHED)	2001.07.18
	GONGYOUNG ENG	INI STEEL V/D ESTABLISH	2	SPV355 / T20 x ID6360 (10% DISHED)	2001.10.14
	DOOSAN/BECHTEL	EQUIVA LOW SULFUR GASOLINE	1	SA516-70N+410S / T60.5+3 x ID4114.8 (2:1 ELLIP)	2001.12.26
	DOOSAN	VALCOR	2	SA387-11 CL2+304L / T49+3.8 x ID3048 (2:1 ELLIP)	2001.12.10
2002	DOOSAN/UAE OFFSETS GROUP	FUJAIRAH WATER&POWER	3	A516-70+B122-C70600 / T14+3.5 x ID4150 (HEMI)	2002.01.08
	DOOSAN/CHIYODA	RAS LATTAN	1	SA516-65 / T96 x ID5250 (HEMI)	2002.01.25
	DOOSAN/CHIYODA	RAS LATTAN	2	SA516-65+316L / T105+3.5 x ID3600 (HEMI)	2002.02.27
	DOOSAN/JGC	HASSI-R'MEL BOOSTING	24	SA516-70N+304L / T65+3.4 x ID2800 (HEMI)	2002.02.19
	DOOSAN/CHIYODA	RAS LATTAN ONSHORS EXPANSION	2	SA516-70N / T32 x ID5500 (2:1 ELLIP)	2002.03.04
	HANTECH/SAMNAM PETRO CHEMICAL	K4	4	A516-70+B265-1 / T29+3 x ID2100 (2:1 ELLIP)	2002.03.20
	HANTECH/SAMNAM PETRO CHEMICAL	ENERGY	2	A516-70+265-2 / T30+4 x ID2000 (2:1 ELLIP)	2002.06.25
	DOOSAN/FOSTER WHEELER USA	PREMCOR CLEAN FUELS	2	SA516-70N+304L / T82.6+3.2 x ID2162.2 (2:1 SEGMENT)	2002.09.30
	DOOSAN/KBP	EGYPT LNG	2	A516-70+S5 / T59 x ID4076 (2:1 ELLIP)	2002.10.29
	DKME/CHIYODA	JUPC ETHYLENE	2	SA240-304 / T58 x ID2320 (2:1 ELLIP)	2002.12.11
2003	DOOSAN/DSME	SANHA CONDENSATE	8	SA516-70N / T107.97 x ID1981.2 (HEMI)	2003.01.10
	DOOSAN/DSME	SANHA CONDENSATE	8	SA516-70N / T73.97 x ID2895.6 (2:1 ELLIP)	2003.01.17
	DOOSAN/NIGERIA LNG	KELLOGG	4	BS1501-224-490B / T65 x ID5000 (2:1 ELLIP)	2003.02.17
	DOOSAN/JUPC	JUPC EO/EG	2	SA240-304 / T20 x ID6000 (2:1 ELLIP)	2003.04.23
	DOOSAN/CHIYODA/JGC	SIPC COMPLEX AT JUBAIL	2	SA516-70N+304L / T73+3.5 x ID4300 (2:1 ELLIP)	2003.05.26